



Training
Qualifications UK

End-Point Assessment Price List

2024/25

Table of Contents

Adult care

Business generics

Childcare and early years

Digital marketing

Education

HR

Hair

Leadership and management

Learning and development

Poultry

Project management

Payment terms

Registration and gateway fee

Resit fee

Cancellation fee

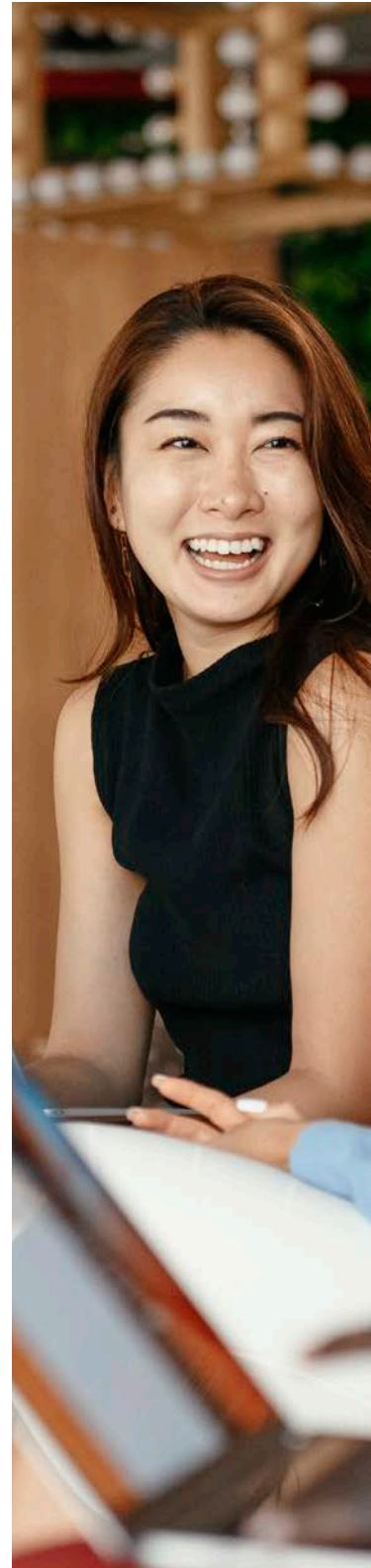
Invigilation fee

Associated learner fees

Cancellation fees

Appeals

Additional charges



Adult care

Adult Care Worker TQUK Level 2 End-Point Assessment for ST0005 Adult Care Worker (610/1940/9)	Remote	Face-to-face
Total EPA cost	£500	£625
Situational judgement test (MCQ) resit/retake	First free, £25 thereafter	
Professional discussion resit/retake	£125	£225

Lead Adult Care Worker TQUK Level 3 End-Point Assessment for ST0006 Lead Adult Care Worker (610/1941/0)	Remote	Face-to-face
Total EPA cost	£500	£625
Situational judgement test (MCQ) resit/retake	First free, £25 thereafter	
Professional discussion resit/retake	£125	£225

Lead Practitioner in Adult Care TQUK Level 4 End-Point Assessment for ST0007 Lead Practitioner in Adult Care (610/1942/2)	Remote	Face-to-face
Total EPA cost	£850	£975
Observation of practice resit/retake	£225	£325
Professional discussion resit/retake	£175	£275

Leader in Adult Care TQUK Level 5 End-Point Assessment for ST0008 Leader in Adult Care (610/1943/4)	Remote	Face-to-face
Total EPA cost	£850	£975
Observation of leadership resit/retake	£225	£325
Professional discussion resit/retake	£175	£275

Business generics

Customer Service Practitioner TQUK Level 2 End-Point Assessment for ST0072 Customer Service Practitioner (603/2722/4)	Remote	Face-to-face
Total EPA cost	£500	£650
Showcase resit/retake	£75	£175
Practical observation resit/retake	£100	£175
Professional discussion resit/retake	£75	£175

Customer Service Specialist TQUK Level 3 End-Point Assessment for ST0071 Customer Service Specialist (603/3830/1)	Remote	Face-to-face
Total EPA cost	£550	£725
Work based project interview resit/retake	£150	£250
Practical observation resit/retake	£100	£175
Professional discussion resit/retake	£75	£175

Business Administrator TQUK Level 3 End-Point Assessment for ST0070 Business Administrator (610/0999/4)	Remote	Face-to-face
Total EPA cost	£700	£825
Multiple choice question test resit/retake	First free, £25 thereafter	
Project presentation resit/retake	£150	£250
Portfolio Interview resit/retake	£175	£275

Childcare and early years

Children, Young People and Families Practitioner		
TQUK Level 4 End-Point Assessment for ST0088 Children, Young People and Families Practitioner (603/4801/X)		
	Remote	Face-to-face
Total EPA cost	£700	£825
Practical observation resit/retake	£250	£350
Competency based interview resit/retake	£200	£300
Children, Young People and Families Manager		
TQUK Level 5 End-Point Assessment for ST0087 Children, Young People and Families Manager (603/4800/8)		
	Remote	Face-to-face
Total EPA cost	£750	£875
Situational judgement test resit/retake*	£75	£125
Competency based interview resit/retake	£225	£325
*A £80 surcharge is added for TQUK remote invigilation		
Early Years Practitioner		
TQUK Level 2 End-Point Assessment for ST0888 Early Years Practitioner (603/6241/8)		
	Remote	Face-to-face
Total EPA cost	£550	£675
Multiple choice question test resit/retake*	First free, £25 thereafter	
Professional discussion resit/retake	£125	£225
*A £55 surcharge is added for TQUK in person invigilation		
Early Years Educator		
TQUK Level 3 End-Point Assessment for ST0135 Early Years Educator (603/5833/6)		
	Remote	Face-to-face
Total EPA cost	£600	£725
Multiple choice question test resit/retake*	First free, £25 thereafter	
Professional discussion resit/retake	£125	£225
*A £55 surcharge is added for TQUK in person invigilation		
Early Years Lead Practitioner		
TQUK Level 5 End-Point Assessment for ST0551 Early Years Lead Practitioner (610/0974/X)		
	Remote	Face-to-face
Total EPA cost	£895	£1,020
Observation of practice resit/retake	£225	£200
Professional discussion resit/retake	£225	£300
Case Study presentation resit/retake	£225	£300
Playworker		
TQUK Level 2 End-Point Assessment for ST0867 Playworker (610/2146/5)		
	Remote	Face-to-face
Total EPA cost	-	£550
Multiple choice question test resit/retake	First free, £25 thereafter	
Observation resit/retake	-	£175
Professional discussion resit/retake	£75	£175

Digital marketing

Digital Marketer TQUK Level 3 End-Point Assessment for ST0122 Digital Marketer (610/1586/6)	Remote	Face-to-face
Total EPA cost	£1,000	£1,125
Summative portfolio resit/retake		
Employer reference resit/retake	£800	£900
Synoptic project resit/retake		
Interview resit/retake		

Education

Teaching Assistant TQUK Level 3 End-Point Assessment for ST0454 Teaching Assistant (603/3868/4)	Remote	Face-to-face
Total EPA cost	-	£700
Observation of practice resit/retake	-	£250
Professional discussion resit/retake*	£75	£225

*A £50 surcharge is added for TQUK invigilation

Learning Mentor TQUK Level 3 End-Point Assessment for ST0148 Learning Mentor (603/5229/2)	Remote	Face-to-face
Total EPA cost	£725	£850
Observation of practice resit/retake	£250	£350
Professional discussion resit/retake	£125	£225

Assessor Coach TQUK Level 4 End-Point Assessment for ST0146 Assessor Coach (603/5230/9)	Remote	Face-to-face
Total EPA cost	£850	£975
Observation of practice resit/retake	£250	£350
Professional discussion resit/retake	£150	£250

Learning and Skills Teacher v1 TQUK Level 5 End-Point Assessment for ST0149 Learning and Skills Teacher (603/5238/3)	Remote	Face-to-face
Total EPA cost	£1,200	£1,325
Observation of practice resit/retake	-	£350
Professional discussion resit/retake	£250	£350

Learning and Skills Mentor TQUK Level 4 End-Point Assessment for ST1379 Learning and Skills Mentor (610/2927/0)	Remote	Face-to-face
Total EPA cost	£700	£800
Observation of practice resit/retake	£200	£300
Professional discussion resit/retake	£200	£300

Learning and Skills Assessor TQUK Level 3 End-Point Assessment for ST1380 Learning and Skills Assessor (610/2928/2)	Remote	Face-to-face
Total EPA cost	£600	£700
Observation of practice resit/retake	£200	£300
Professional discussion resit/retake	£75	£175

HR

HR Support TQUK Level 3 End-Point Assessment for ST0239 HR Support (610/1002/9)		
	Remote	Face-to-face
Total EPA cost	£900	£1,025
Consultative project resit/retake	£250	£250
Professional discussion resit/retake	£175	£275

HR Consultant Partner TQUK Level 5 End-Point Assessment for ST0238 HR Consultant Partner (610/1000/5)		
	Remote	Face-to-face
Total EPA cost	£1,200	£1,325
Consultative project resit/retake	£250	£250
Professional discussion resit/retake	£175	£275

Hair

Hair Professional v1.1* TQUK Level 2 End-Point Assessment for ST0213 Hairdressing Professional (603/3259/1)		
	Remote	Face-to-face
Total EPA cost	-	£450
Observation and questioning resit/retake	-	£250

*No remote options are available for the standard

Hairdressing Professional v1.2* TQUK Level 2 End-Point Assessment for ST0213 Hairdressing Professional (603/3259/1)		
	Remote	Face-to-face
Total EPA cost	-	£550
Multiple choice question test resit/retake	First free, £25 thereafter	
Practical assessment resit/retake	-	£350
Professional discussion resit/retake**	£75*	-

*Initial assessment face-to-face only for 1-2 apprentices.

**For 1-2 apprentices, the professional discussion takes place on the same day. If you do not wish for the professional discussion to be sat on the same day, there is a £125 surcharge for it to take place remotely on a separate day. For 3-4 apprentices, the professional discussion takes place on a separate day remotely with no surcharge.

Barbering Professional* TQUK Level 2 End-Point Assessment for ST1273 Barbering Professional (610/2926/9)		
	Remote	Face-to-face
Total EPA cost	-	£450
Multiple choice question test resit/retake	First free, £25 thereafter	
Practical assessment resit/retake	-	£210
Professional discussion resit/retake**	£75*	-

*Initial assessment face-to-face only for 1-3 apprentices.

**For 1-3 apprentices, the professional discussion takes place on the same day. If you do not wish for the professional discussion to be sat on the same day, there is a £125 surcharge for it to take place remotely on a separate day. For 4 apprentices, the professional discussion takes place on a separate day remotely with no surcharge.

Advanced and Creative Hair Professional* TQUK Level 3 End-Point Assessment for ST0214 Advanced and Creative Hair Professional (603/6242/X)		
	Remote	Face-to-face
Total EPA cost	-	£575
Multiple choice question test resit/retake	First free, £25 thereafter	
Observation and questioning resit/retake	-	£250
Professional discussion resit/retake	£75	£175

*No remote options are available for the standard

Leadership and management

Team Leader or Supervisor v1.2 TQUK Level 3 End-Point Assessment for ST0384 Team Leader or Supervisor (610/1004/2)	Remote	Face-to-face
Total EPA cost	£675	£800
Presentation with questions and answers resit/retake	£125	£225
Professional discussion resit/retake	£125	£225

Operations or Departmental Manager v1.2 TQUK Level 5 End-Point Assessment for ST0385 Operations or Departmental Manager (610/1003/0)	Remote	Face-to-face
Total EPA cost	£1,000	£1,125
Project proposal, presentation and questioning resit/retake	£175	£275
Professional discussion resit/retake	£175	£275

Learning and development

Learning and Development Practitioner TQUK Level 3 End-Point Assessment for ST0562 Learning and Development Practitioner (603/3867/2)	Remote	Face-to-face
Total EPA cost	£950	£1,075
Work based project with professional discussion resit/retake	£250	£350
Learning journal presentation resit/retake	£250	£350

Learning and Development Consultant Business Partner TQUK Level 5 End-Point Assessment for ST0563 Learning and Development Consultant Business Partner (603/3866/0)	Remote	Face-to-face
Total EPA cost	£1,100	£1,225
Work based project with professional discussion resit/retake	£250	£350
Learning journal presentation resit/retake	£250	£350

Poultry

Poultry Technician TQUK Level 3 End-Point Assessment for ST0467 Poultry Technician (610/2112/X)	Remote	Face-to-face
Total EPA cost	£1,200	-
Short answer knowledge test resit/retake	£75	-
Observation and video tasks resit/retake	£150	-
Interview resit/retake	£100	-

Poultry Worker TQUK Level 2 End-Point Assessment for ST0389 Poultry Worker (610/2111/8)	Remote	Face-to-face
Total EPA cost	£925	-
Multiple choice question test resit/retake	First free, £25 thereafter	
Observational practical assessment and video task resit/retake	£150	-
Professional discussion resit/retake	£75	-

Project management

Associate Project Manager TQUK Level 4 End-Point Assessment for ST0310 Associate Project Manager (610/0996/9)	Remote	Face-to-face
Total EPA cost	£1,000	£1,125
Portfolio presentation resit/retake	£200	£300
Professional discussion resit/retake	£200	£300



Payment terms

Registration and gateway fee

An invoice will be issued for the registration fee (25% of overall standard fee) upon registration and a gateway fee (75% of overall standard fee) upon gateway submission. Gateway fees will be adjusted depending upon the remote or face-to-face assessment preference, where allowed by the assessment plan.

Resit fee

One free resit per multiple choice test is offered where included within a standard. Assessment component resits will be determined on a standard by standard basis.

Cancellation fee

A cancellation fee applies where a confirmed assessment component or a planning meeting is:

- cancelled by the training provider, employer, or apprentice with less than five working days' notice
- not attended by the apprentice
- a late submission of a project, after the agreed deadline.

Invigilation fee

An invigilation surcharge can be applied in different scenarios where:

- TQUK invigilates in person
- the exam component is assessed by 'short answer question'.

Associated learner fees

Cancellation fees

	Remote	Face-to-face	Multiple choice question test	Short answer questions test	Assessment planning meeting
Level 2	£125	£225	£25	N/A	£38
Level 3	£125	£225	£25	N/A	£38
Level 4	£225	£325	£25	N/A	£38
Level 5	£225	£325	£25	£80	£38

Appeals

Appeals which are not upheld are subject to a fee of £150 per appeal. Appeals which are upheld are not billed. An additional fee of £150 will be charged for an Independent Review. Please read our [Appeals Policy](#) for more information.

Additional charges

Where an extra day is required to undertake planned face-to-face assessment, TQUK reserves the right to charge an additional assessment day surcharge per affected apprentice.

Invigilation surcharges for assessment components may be incurred and are proportionate to the assessment component and the assessment preference. The surcharge will be noted alongside the standards in this document.

